

# Mapping Invasive Species:

Tamarisk along Rattlesnake Creek and the Ninnescah River, KS

Photo: Ryan Armbrust (KFS)



Photo: <https://riversedgewest.org/what-tamarisk>



## What is Tamarisk?

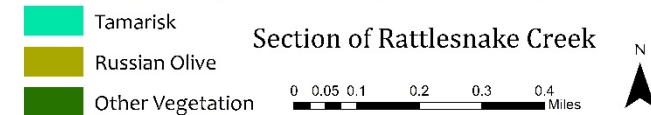
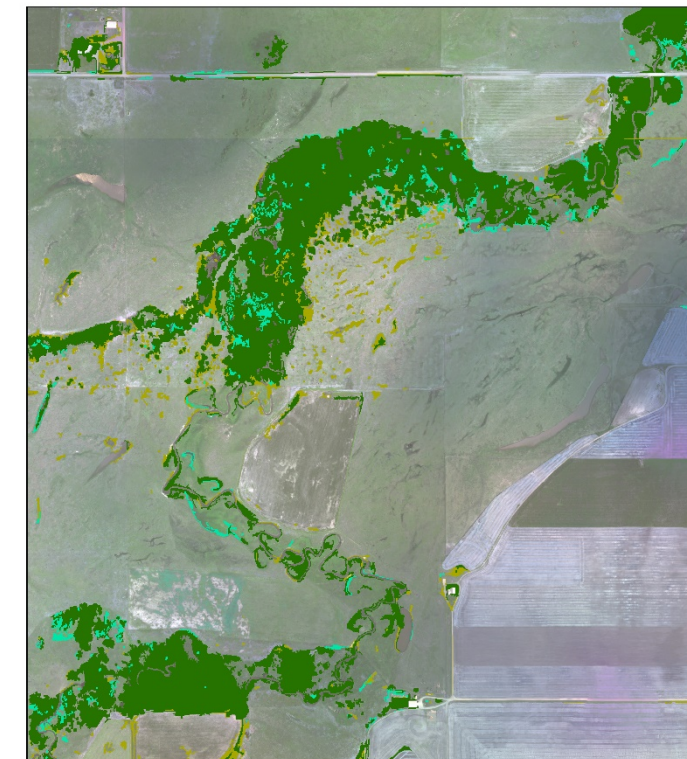
- Non-native, invasive shrub with feathery green or blue foliage.
- Introduced to America in the 1820's, Tamarisk was originally used for windbreaks, stream bank stabilization, as well as aesthetics. It came from Southern Europe and the Eastern Mediterranean region.
- Tamarisk is most commonly found in riparian areas in Western United States. Over time, it has migrated and found a home in Kansas.

## Threat?

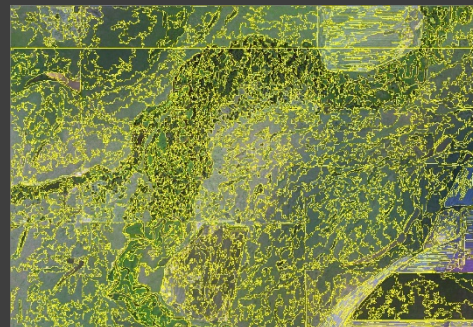
- Tamarisk is known for outcompeting and displacing native species. It requires a lot of water that other plants could use.
- Wildfire/flooding hazards are more prone in areas with high concentrations of Tamarisk.
- Tamarisk does not provide good protection for wildlife to inhabit, and lastly, it can be very difficult to manage.

## Training Data

- Supervised classifications require training data in order to run.
- Typically, the more data used, the better the result. We only had a small sample of points to draw from.
- This will be an iterative process. Once the first results are ground-truthed, we hope to have additional, more accurate training data for use in a new, refined map.



Aerial



Segmented



Classified

