

Place
Stamp
Here

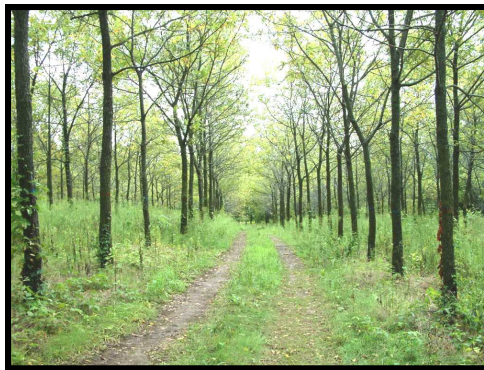
Kansas State Tree Farm Committee
2610 Claflin RD
Manhattan, KS 66502-2798



Kansas Tree Farm Program



Sustaining the Forest Resources of Kansas



Encouraging the active management of forestlands since 1963

Tree Farming in Kansas

Since 1963, Kansas Tree Farmers have been managing and protecting their share of the 2 million acres of the state's private forestland. The Kansas Tree Farm Program is part of the American Tree Farm System, (a program of the American Forest Foundation, a non-profit 501(c)(3)), which networks with 73,000 family forest owners and 4,400 foresters nationwide.

Tree Farm is a volunteer program with more than 100 certified Kansas Tree Farmers who meet the American Forest Foundation's Standards of Sustainability on nearly 6,000 acres of forestland.

Our mission is the promotion of renewable forest resources on private lands, protection of the environment and increasing public understanding of all the benefits of productive forestry.

Qualifications for Tree Farm Certification

- ◆ Own at least 10 acres of contiguous forestland.
- ◆ Have a written forest management plan to guide forestry projects.
- ◆ Ensure enough trees remain after timber harvests through proper tree selection, encouraging natural regeneration, and replanting openings.
- ◆ Minimize disturbances adjacent to streams.
- ◆ Maintain or enhance habitat for fish, wildlife and plants listed in the forest management plan.
- ◆ Recognize historical, biological, archaeological, cultural, and geological sites of special interest.
- ◆ Recognize and protect the aesthetic value of the forest.



David Brecheisen, long-time Tree Farmer, is one of many KS Tree Farmers improving and protecting forestland.

Kansas Tree Farm Program, 2610 Claflin RD, Manhattan, KS 66502
Phone: 785-532-3300 E-mail: atchison@ksu.edu

How to Become a Kansas Tree Farmer

For more information on how to become a Kansas Tree Farmer, please complete the form below, detach at the dotted line and return to the Kansas State Tree Farm Committee.

Name: _____ Phone#: _____

Mailing Address: _____

City: _____ State: _____ ZIP: _____ E-mail: _____

Acres of Woodland: _____ County: _____ Township: _____

How Tree Farm Operates in KS

The State Tree Farm Committee guides program operations. The program is administered by the Kansas Forest Products Association in cooperation with the Kansas Forest Service. The Kansas Forest Service provides professional foresters who offer on-site visits, professional forestry advice, forest management plans, and are responsible for certifying Tree Farms.

Once a Tree Farm becomes certified, it must be re-inspected every five years to retain certification status. Tree Farms must be actively managed to remain in the American Tree Farm System.

Kansas Tree Farm Awards

Each year the State Tree Farm Committee presents a Forest Stewardship Tree Farmer of the Year Award and the Kansas Agroforestry Award to landowners committed to good forestry.



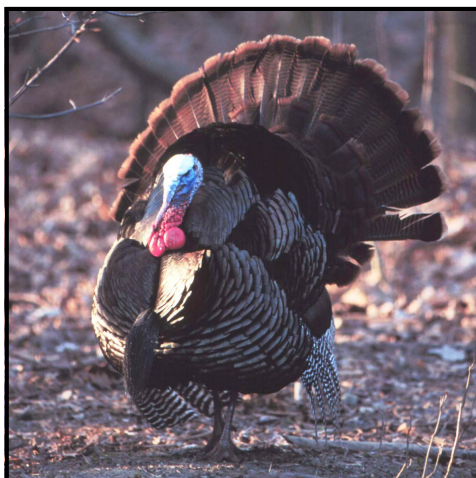
Tree Farm Field Days and Workshops provide helpful information to woodland owners

Steps to Becoming Certified

- ◆ Call Kansas Forest Service at 785-532-3300 or e-mail atchison@ksu.edu. You will be put in touch with your local forester. Or fill out and mail **How to Become a Kansas Tree Farmer** (side panel).
- ◆ Request a forest management plan be prepared for your forestland.

Benefits of Tree Farming

- ◆ Free professional forestry advice and management plan.
- ◆ Network with forest owners, foresters, consultants, loggers, timber buyers and researchers.
- ◆ Invitations to forestry field days and seminars.
- ◆ One complimentary issue per year of Tree Farmer Magazine.
- ◆ Certification that your forestlands meet national and international standards of sustainable forestry.
- ◆ A free Tree Farm sign to display on your forestland to promote good forest stewardship.



For more information contact Bob Atchison, Program Administrator, at 785-532-3310 or by e-mail at atchison@ksu.edu. Check out the state Web site at www.kstreefarmssystem.org/ and the national site at <http://www.treefarmssystem.org/>.