



# Kansas Canopy

Spring 2003  
Issue #6

Newsletter of the Kansas Forest Service

## Now That I Got 'Em, What Do I Do With 'Em?

Okay, now that you have ordered your seedlings from Kansas Forest Service, and they are sitting in front of you, what can you do to properly take care of them before planting them? The first thing that a landowner should do upon receiving the plants is to inspect them. Look inside the box. There should have been a handout included that explains properly planting seedlings. If not, call the Kansas Forest Service and a copy will be sent to you.

The plants should have been wrapped in plastic and have moist mulch over the roots. The mulch does not have to be soaking wet, but it should feel moist to the touch. Look for signs of mold on the plant. If you suspect something is wrong, call the Kansas Forest

Service as soon as possible so that we can discuss what needs to be done. If you feel confident that everything is alright, put the plants back in the box, add a little more water to the mulch, then rewrap the plants with plastic and close the box. Keep the box in the coolest, moistest place you can find. Do not saturate the seedlings because it is possible to suffocate and kill the seedlings, nor do you want them to freeze. By doing this, the seedlings will be alright for a week or so, but try to get them in the ground as soon as possible. If you notice that the seedlings are starting to "break bud" or are beginning to "leaf out," get them in the ground immediately.

When it comes time to start planting, there are several tips that can increase

survival as well. Keep the box out of the sun and wind. Again, you don't want the seedlings to dry out. Remove only enough seedlings to plant a row, or so, and then return to the box to get more seedlings. When carrying the seedlings to be planted, carry them in a planting bag, or a bucket to avoid drying out their roots in the sun and wind. Keep the roots moist by periodically wetting them, or wrapping the roots in a wet rag. Refer to the handout on properly planting seedlings and follow the directions. Once

the seedlings have been correctly planted, you are almost through, but not quite yet.

The final step that I recommend is that the seedlings receive a good soaking of water, even if the soil has adequate moisture.

Many times the planting hole will have an air pocket in the bottom, which can limit roots' growth. By soaking the seedling with approximately a gallon or two of water, the soil is settled and air pockets are sealed. If conditions are good for planting, the air pocket may not matter because the other roots take over; however, if conditions are not optimum, that air pocket can kill the seedling. So why take the chance? Often times, the way seedlings are handled prior to planting can make or break the success of the project. Take the time to properly handle the plants to help ensure their survival.

*Joshua Pease, Conservation Forester, manages the Conservation Tree Planting Program and related activities for the Kansas Forest Service.*



### Contents:

- Comments from the State Forester ..... 2
- Update on Forest Land Enhancement Program ..... 2
- Tree Profile..... 3
- Community Forestry Program ..... 4
- Tree City USA Program ..... 4
- Scholarship Information..... 5
- Fire Prevention Program ..... 5
- District Highlight.. 6
- New District Boundaries..... 8
- Kansas Woodlands 9
- Federal Excess Personal Property Program ..... 10
- Grant Assistance . 11
- Calendar of Events ..... 12

**Newsletter  
Publication  
Information:**

**Kansas Canopy:  
Newsletter of the Kansas  
Forest Service**

**State Forester:** Ray Aslin

**Contact Information:**

Kansas Forest Service  
2610 Claflin Rd.  
Manhattan, KS  
66502-2798  
(785) 532-3300  
KFS@oznet.ksu.edu  
[www.kansasforests.org](http://www.kansasforests.org)

**Contributors:** Kansas  
Forest Service Staff

*To receive the Adobe  
Acrobat version of this  
newsletter instead of  
a paper copy, please  
contact the Kansas Forest  
Service by mail, phone,  
or e-mail.*

*To discontinue receiving  
this newsletter, please  
contact the Kansas Forest  
Service by mail, phone,  
or e-mail.*

## Comments from the State Forester

In my office is a sign "Wood is Good." I see that sign every day I'm in my office and it reminds me of the importance of trees and the many wood products they provide that we use in our daily lives. Have you ever stopped to think about all the products we use that come from trees? Building materials, furniture, paneling, pencils, paper, resins, mulch, utensils, tools, fencing, crating ... the list is almost endless. For us to enjoy these products, we have to harvest trees.

Harvesting or cutting trees has gotten a bad rap over the last 10 years or so. Nobody seems to think cutting trees is a good idea and that we ought to let them stay in the forest forever. That would be fine if we all decided not to use wood products. However, the fact is we are using more wood products today than 50 years ago and the demand continues to increase. One of the primary uses of wood nationally is in home construction. Even though the average family size has decreased since the 1960s, the average size of homes has gotten bigger. There is a real disconnect between the "do not cut" attitude and our increasing appetite for wood products.

To a forester, harvesting is a good forest management tool. Management requires the removal of mature, overmature, overcrowded and damaged trees to make room for smaller trees to grow and new trees to get started. It increases the overall health and productivity of the forest, provides benefits such as clean water, soil erosion control, wildlife habitat and recreational opportunities in addition to wood products.

In Kansas, trees harvested from our forest lands are used primarily in furniture, paneling, pallets, and crating. Utilizing trees for wood products is important to our forest industry and to the overall state's economy. Based on a 1998 assessment of timber product output and use, there are 38 sawmills operating in the state, processing more than 30 million board feet of timber annually. This may sound like a lot of trees, but actually, only about 30 percent of the annual growth of wood in our forests is cut each year. Many more trees could stand to be harvested each year in our forests and the wood harvested could be put to good uses. By actively managing our forests, the health and productivity of the forest will be improved and income from the sale of harvested trees will benefit landowners. Case in point. Recently, a Kansas landowner received more than \$200,000 for a timber sale on 100 acres of forest land. Although the value of the timber sale was unusually high, it points out the importance of forest management in obtaining top dollar for timber.

If you are a forest landowner, I encourage you to contact a District Forester and request a visit to your property. Foresters can help place your forest land under management to meet your ownership objectives. The visit is free of charge. You may have the opportunity to receive additional income off your property that you didn't know existed.

**Ray Aslin**, State Forester, oversees all operations of the Kansas Forest Service.

## Update on the Forest Land Enhancement Program (FLEP)

Funding for a new cost-share program has arrived in Kansas! The Forest Land Enhancement Program (FLEP) will pay landowners 75 percent of their cost to plant trees and implement management practices in woodlands and windbreaks. Landowners may apply by contacting their local district forester. To qualify landowners must own at least 5 contiguous acres and have a management plan that outlines how their project will be accomplished. District foresters are available to prepare management plans at no charge. Thinning woodlands, planting trees adjacent to streams and rivers, field windbreaks, windbreak

renovation, and living snowfences are high priority practices. Livestock windbreaks are high priority when they remove animals from riparian areas.

Applications will be approved in the order they are received. Farmstead, homesite and livestock windbreaks are low priority and will be deferred until July 1st. At that time low priority practices will be approved until remaining funds are obligated. For more information call 785-532-3310.

**Bob Atchison**, Rural Forestry Coordinator, coordinates all rural forestry activities for the Kansas Forest Service.



# Tree Profile



## Ginkgo

*Ginkgo biloba*

**Native To:** Native to China; originally native to Asia, Australia, and North America. Introduced to the United States in 1784.

**Mature Height:** 50 to 80 feet

**Spread:** 40 to 60 feet

**Form:** Oval to pyramidal, generally open when young, becoming more dense with maturity. Medium texture in summer, becoming course in winter.

**Growth Rate:** Slow to medium.

**Foliage:** Alternate; simple; fan-shaped 2- to 4-inch long deciduous leaf. Light green to medium green in summer with excellent yellow fall color.

**Flowers:** Dioecious (male and female are separate trees); pleasant fragrance; non-showy.

**Fruit:** Not a true fruit but a naked seed; 1 inch fleshy, green, and not showy. Fleshy covering is extremely messy and smelly and can cause skin irritation, and for this reason only male trees should be planted. Seed is reported to be well flavored and is eaten by the Japanese and Chinese.

**Bark and Stems:** Gray to brown ridges with dark furrows. Branches generally grow upright; pruning often required to maintain a central leader.

**Site Requirements:** Adapted to a wide range of soil conditions, textures, pH and moisture conditions. Performs very well in most urban conditions including drought and heat, and air and salt pollutant tolerant.

**Hardiness Zone:** 3 to 9; grown statewide.

**Insect and Disease Problems:** Considered to be extremely pest-free. Also damage resistant to storm conditions including wind and ice/snow loading.

**Limitations:** Requires a large area for full growth form. Should not be planted near overhead utilities. Pruning required for good form and structure.

**Suggested Applications:** Excellent specimen, park, shade and street tree. Underplanted in most Kansas communities.

**Cultivars:** Wide variety of cultivars available to meet a wide variety of

cultural and functional applications. Cultivar forms range from broadly pyramidal to upright columnar habit.

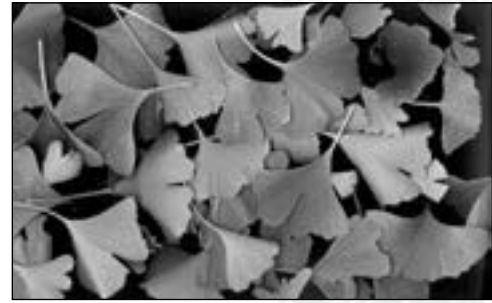
**Comments:** Commonly referred to as the Maidenhair Tree, this species has been growing on earth for more than 150 million years. This tree is a true gymnosperm, and combined with its history as a living fossil, makes an excellent addition to any park for educational purposes alone. Medical extracts from the Ginkgo have been known and used for hundreds of years. Medicinal aspects of Ginkgo extract are touted to include improved brain functioning by improving cerebral blood flow, circulation and oxygenation. Ginkgo is reported to be good for depression, headaches, memory loss, and tinnitus. The sex of the Ginkgo is difficult to determine, as fruiting will not occur for 20 years or more, and care should be taken when purchasing unnamed cultivars.

### References:

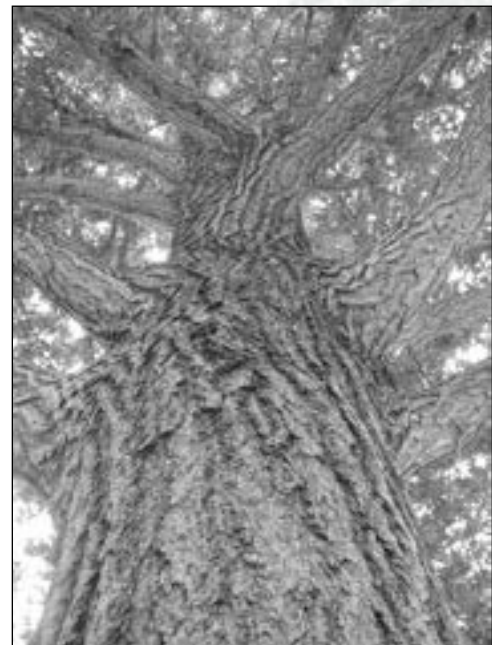
Manual of Woody Landscape Plants: Their Identification, Ornamental Characteristics, Culture, Propagation and Uses by Michael A. Dirr, Stipes Publishing, Champaign, IL.

Trees for Urban and Suburban Landscapes by Edward F. Gilman, Delmar Publishers, Albany, NY.

**Eric Berg,** Community Forestry Coordinator, coordinates all urban and community forestry activities for the Kansas Forest Service.



*Known as 'The Living Fossil' these leaves bear little difference to fossils which are over 150 million years old.*



*Limb structure is very strong and withstands strong winds and ice loading*



*One of the few pest-free trees*

# Community Forestry Training & 2003 Tree City USA Recognition Day, April 1–2, 2003

## Holiday Inn Holidome, Manhattan, Kansas



The Kansas Forest Service has announced that the statewide Community Forestry Training and 2003 Tree City USA Recognition Day is scheduled for April 1 - 2, 2003 at the Holiday Inn Holidome in Manhattan.

### April 1, 2003 - Community Forestry Training:

This opportunity will be offered on Tuesday, April 1 from 1 to 5 pm. This training is open to the general public, professionals and communities at large from across the state. Individuals attending this training will have an opportunity to attend one of four concurrent sessions which will be offered:

#### **Session 1: Nuts and Bolts of Tree Care**

**Description:** Introductory overview which covers tree selection, planting tips and techniques, principles of tree pruning and review of common insect and disease problems of trees in Kansas. An emphasis will be placed on demonstrations and hands-on learning.

**Target audience:** tree boards members, master gardeners and those just starting out in community forestry.

#### **Session 2: Landscape Design and Plant Selection**

**Description:** This session will go into further detail on landscape design and the

plant selection process. Using an outdoor site for demonstration, participants will be guided through the design process with direct “take home” applications.

**Target audience:** park and recreation staff, tree board members, horticultural agents.

#### **Session 3: Getting to the Root of it All**

**Description:** Stem girdling roots (SGR) are one of the leading causes for tree decline and tree failures in the community forest. Learn through diagnosis and demonstration how this can be prevented in your plantings. Demonstrations will include demonstration of the air spade for diagnosis of planting depth and SGR.

**Target audience:** Tree board members, city staff, arborists, city staff, horticultural agents.

#### **Session 4: Electrical Hazards Awareness Program**

**Description:** Trees and utility wires cannot occupy the same space. This introductory program is designed to inform tree workers about the hazards and special techniques of working around energized conductors.

**Target audience:** municipal foresters, arborists, city staff.

A more detailed program, including session speakers and descriptions, as well as registration materials may be obtained by calling 785-532-3300.

### April 2 - Tree City USA Recognition Day:

This event is scheduled for the following day, Wednesday, April 2, 2003. Attendance will be limited to community members from the 2002 certified Tree City USA communities. As in past years, this is an excellent opportunity to network with other tree board members and receive your recognition awards from the Kansas Forest Service and National Arbor Day Foundation. Other activities planned for the day include: 2002 State Forester’s Award; recognition and award for the State Arbor Day Poster Contest; community forestry informational booths, projects and tables;

free technical information, publications and handouts; free continental breakfast and lunch; door prizes, drawings and fun competitions.

Mark your calendar - April 1 and 2 - and watch your mail for upcoming registration information. Registration information will be sent directly to 2002 certified Tree City USA communities and highlighted in the March edition of TreeLink. If you have any questions or would like to request further information please do not hesitate to give us a call at 785-532-3300.

**Eric Berg**, Community Forestry Coordinator, coordinates all urban and community forestry activities for the Kansas Forest Service.

## Scholarships Available for Forestry Conference

Due to popular demand, the Kansas Forest Service, in cooperation with the newly formed Kansas Forest Products Association, will once again be offering scholarships to cover registration expenses (\$85 per person) for individuals from Kansas wishing to participate in the "Forestry on the Grow 2003 Conference & Exposition" to be held at the Western Hills Resort located in Sequoyah State Park near Wagoner, Oklahoma.

The conference will be held Tuesday, April 29th through Thursday, May 1st. It is designed with four concurring sessions that focus on the interests of: forest landowners; primary forest product processors; secondary wood manufacturers; and loggers. Special attention will be given this year to address the new phytosanitation requirements slated to be enforced on

pallets and other hardwood shipping material. Twenty-three people from Kansas have attended this conference each of the past 2 years with favorable responses. The conference provides good educational opportunities as well as a chance to network with others having similar interests.

Anyone from Kansas wishing to participate in this conference and wanting to receive more information about the agenda and scholarships, should contact Dave Bruton, Utilization and Marketing Forester, 318 Broadway, Valley Falls, KS 66088; 785-945-6147; e-mail: [dbruton@oznet.ksu.edu](mailto:dbruton@oznet.ksu.edu). The conference registration deadline is April 15th.

**David Bruton**, Utilization and Marketing Forester, provides direct technical assistance to individuals and companies harvesting, using and/or making wood products.

## Kansas Forest Service Fire Prevention Program

It is time to remind everyone that Kansas Forest Service can help fill the needs for your next fire prevention program. Our cache has grown over the years and I think we have an adequate supply now. Because all items are sent to your organization free of charge, all one need to do to receive prevention material is to ask. Unless it is a special request, we pack approximately 250 items per box. If you need more, just

tell us the number needed, as we do special orders. We also make up smaller orders.

One item for adults is the pocket planner. If an organization needs a supply of these, I will box them separate.

We have a few, more costly items available upon special request that make nice reward gifts for special events or

actions. So, if you have that special young person that deserves recognizing, give us a call or E-mail.

Also, we still have four Smokey Bear costumes available for loan to any group or organization wanting them for fire prevention activities.

Just a reminder, it is very helpful to me and a better guarantee that you will have your request filled if I receive those requests 30 days in advance of the event. Any amount of time less than that could result in wringing hands and no handouts for the kids.

Remember, kids are a good audience to address about starting unwanted fires in the home. As parents and firefighters, we only have a few years to make a lifetime impact on our young citizens; so don't let the opportunity slip through your fingers.

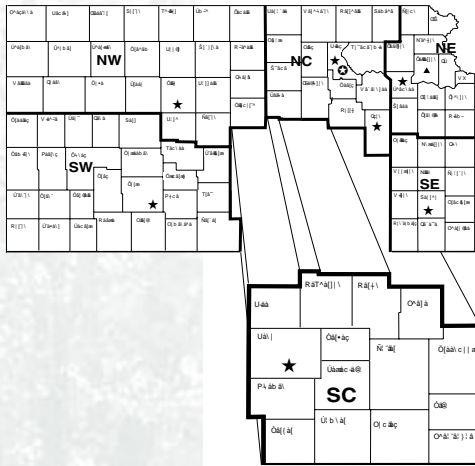
For your prevention material and Smokey Bear costume requests, call (785) 532-3314 or E-mail [rhauck@oznet.ksu.edu](mailto:rhauck@oznet.ksu.edu).

*Ross Hauck, Fire Protection Specialist, provides Master Fire Planning and Prevention Programs for the Kansas Forest Service.*



## District Highlight: South Central - Dennis Carlson

Being a forester in Kansas was perhaps not at the top of my list when I decided upon a major in college. I am a Kansas native who was



raised on a farm north of Atwood Kansas. I graduated from Atwood high school and attended the pre-forestry program at Kansas State University. I then transferred to the University of Missouri at Columbia where I graduated with the BS in Industrial Forestry.



*Dennis Carlson talks to students at the "Walk in the Woods" about insects in a piece of wood*

When I first chose the profession of forestry, I assumed after graduating from college I would be able to locate permanent employment in the Rocky Mountains. The reality is people with greater job experience also seek employment in the mountainous regions, so I went to Mississippi. I spent 7 years working for the USDA Forest Service at the Southern

Bottomland Hardwood Research Unit in Stoneville and the Forest Hydrology Lab in Oxford Mississippi. One day while reading a forestry publication, I noticed the Kansas Forest Service had a vacancy for the south central district. I applied for the position, and accepted the chance to move back to Kansas in the summer of '98.

After returning to Kansas, I quickly realized being a forester in Kansas

is very challenging. The size of the districts along with the different programs offered by the agency can be overwhelming. One of the biggest challenges I had to overcome was becoming comfortable with educating large groups of people about forestry and tree management. Most of my



*City of Lindsborg receiving their Tree City USA award*

forestry career prior to moving to Kansas was spent collecting and analyzing all types of forest data. Having to educate people in large groups made me nervous. The first tree care workshop I did was in El Dorado. I had some interesting moments but since that time, I have conducted community forestry workshops in Park City, Winfield, Wichita, Anthony, and Hutchinson. I also have conducted and helped with many other workshops and trainings our staff has done



*Arbor Day planting involving fifth grade students at Haven.*

across the state. The next community forestry workshop I will conduct will be in McPherson on March 6th. This workshop will focus on tree selection, proper tree care, and an overview of insects and diseases commonly found in south central Kansas. These workshops present the most current information and significant concerns being seen in the area.



*Scotch pine tree with pine wilt (in the back) in a windbreak with cedar trees in front.*

I think it is very important for cities and citizens to realize the importance of proper tree care and proper tree selection prior to planting trees. In many cases, older trees within cities are in a state of decline. Most of the decline is due to age and improper past management. There are many dedicated individuals who have formed tree boards or are working on these important community forestry projects. There are 31 cities within the south central district that have achieved Tree City USA recognition. Many individuals on these tree boards have attended community forestry and arborist training. They have completed significant projects and are making substantial improvements within the cities.



One of largest forest pest problems I became involved with after moving to Kansas was pine wilt. Pine wilt had moved into the south central area in 1998. Several Scotch pine windbreaks and other plantings had widespread mortality due to this disease. Pine wilt now occurs throughout the south central district. In the past 2 years,

countless Scotch pine trees have died due to pine wilt and drought related factors. I often get calls about dead or near dead pine trees and there is very little a person can do other than

perform proper sanitation. It is best to remove and destroy any dead tree to reduce the potential of allowing diseases or insects to spread to other trees.

Another project I have been closely involved with in the last 4 years

is organizing the annual "Walk in the Woods" each October. This is an educational field trip to the historic Riggs Arboretum for fifth grade students. Several members of the Kansas Forest Service staff including Troy Bratton, Jim Strine, Eric Berg, and David Bruton have helped with this event. Students are educated about the environment, tree growth, forestry, tree biology, and forest management. Over the last 6 years, more than 1,000 students have attended the "Walk in the Woods."

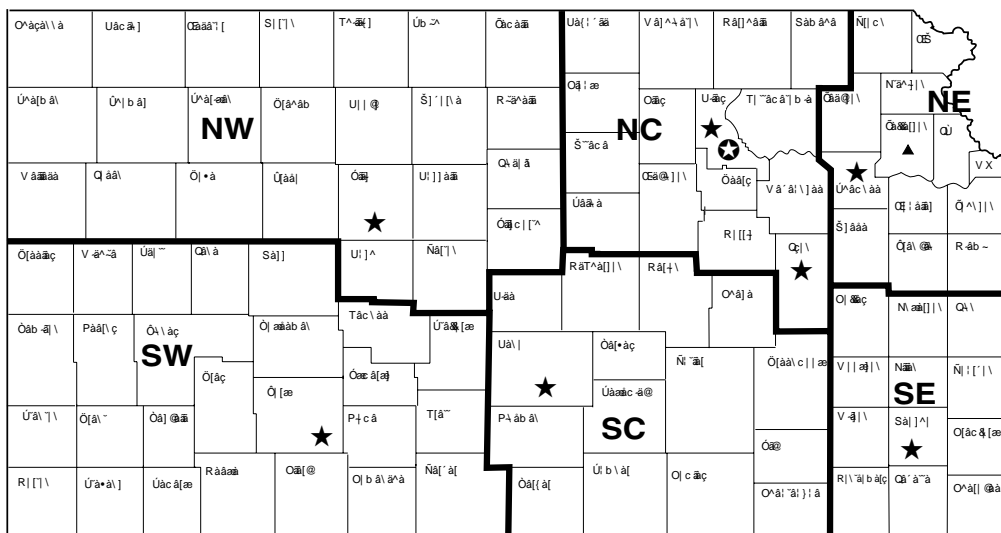
As I look back on my decision to move back to Kansas to work as a forester, I realize being a forester in Kansas has been a rewarding experience. The people I work with and have worked with in the past are truly dedicated individuals. I look forward to continuing my work with the Kansas Forest Service for many years to come

**Dennis Carlson**, District Forester, provides direct technical assistance to Kansans in 15 south central Kansas counties for the Kansas Forest Service.

## New District Boundaries for Kansas Forest Service

Kansas Forest Service district boundaries have recently changed. Restructuring of the districts occurred to accommodate two community district foresters - one responsible for the Northeast and North Central districts and one for the Southeast and South Central districts. The District

Community Foresters will spend their time focusing on our Community Forestry Program in the eastern half of the state. The map reveals the new district boundaries including a listing of foresters and contact information.



### ★ NW

James H. Strine  
District Forester  
Kansas Forest Service  
1232 240th Ave  
Hays, KS 67601-9228  
785-625-3425, Ext. 220  
Fax: 785-623-4369  
jstrine@oznet.ksu.edu

### ★ SW

Troy L. Bratton  
District Forester  
Kansas Forest Service  
107 Layton St.  
Dodge City, KS 67801-2498  
620-227-2392  
Fax: 620-227-6020  
tbratton@oznet.ksu.edu

### ▲ STATEWIDE

David L. Brutton  
Utilization & Marketing  
Forester  
318 Broadway  
Valley Falls, KS 66088-1302  
785-945-6292  
Fax: 785-945-6882  
dbruton@oznet.ksu.edu

### ★ NC

Thad K. Rhodes  
District Forester  
Kansas Forest Service  
1125 Westport Drive  
Manhattan, KS 66502-2860  
785-776-5182  
Fax: 785-539-7983  
trhodes@oznet.ksu.edu

### ★ SC

Dennis W. Carlson  
District Forester  
Kansas Forest Service  
9 West 28th, Suite B  
Hutchinson, KS 67502-3453  
620-663-3501  
Fax: 620-663-3866  
dcarlson@oznet.ksu.edu

### ★ NE

John M. Hamel  
District Forester  
Kansas Forest Service  
2914 SW Plass Court, Suite C  
Topeka, KS 66611-1925  
785-267-2275  
Fax: 785-267-2174  
jhamel@oznet.ksu.edu

### ★ SE

David N. Bruckerhoff  
District Forester  
Kansas Forest Service  
308 W. 14th St.  
Chanute, KS 66720-2895  
620-431-1530  
Fax: 620-431-2108  
dbrucker@oznet.ksu.edu

### ★ STATE OFFICE

Kansas Forest Service  
2610 Claflin Rd.  
Manhattan, KS 66502-2798  
785-532-3300  
Fax: 785-532-3305  
KFS@lists.oznet.ksu.edu

## Are Kansas Woodlands Growing on You?

The Kansas Forest Service certainly hopes so and we have the data to prove it! According to the results of the 2001 forest inventory, Kansas forest land has increased in size from 1.5 to 2.2 million acres since 1994. This supports a continuous growth trend which has been documented since 1937.

### Kansas Forest Land Area

Historically the Kansas Forest Service has worked cooperatively with the USDA Forest Service to inventory the size and condition of Kansas forest land. Traditionally, numerous years would pass between inventories. However, policy changes and increased public debate over the use of our nation's forests caused Congress to mandate a more timely delivery of this valuable information. The beginning of annual forest inventory across the nation through the Forest Inventory and Analysis Program (FIA) was 2001.

#### Important Facts About the Kansas Inventory

- Forest land must be a minimum of 1 acre, 120 feet wide and at least 10 percent stocked with trees.
- Plots are placed randomly throughout the state using satellite imagery with a sampling intensity of 1 plot for every 6,000 acres.
- Each year 20 percent of the state is inventoried. By 2005 the first annual inventory cycle will be complete. Though the 2001 data are considered

“statistically sound information,” data will change each year providing the most accurate information at the end of the cycle.

- 99 percent of the forest land is privately owned with 61 percent of the ownerships in tracts less than 50 acres.
- Most forest land is of natural origin (39,000 acres have been planted).
- The eastern red cedar forest type nearly doubled in area since 1994 to 136,700 acres in 2001.
- Almost half of our forest land is made up of “sawlog-sized” trees (11 inches in diameter or larger).
- Only 33 percent of the wood volume grown each year on Kansas forest land is harvested annually.

It is likely that the increase in forest land area is associated with the expansion of woodlands into abandoned pasture and changes in classification of forest land since 1994. Regardless, responsibility for the proper management of our valuable woodlands and windbreaks falls squarely on the shoulders of private landowners. As our forest land continues to grow on you, don't forget that the Kansas Forest Service is here to help you manage the woodlands and windbreaks on your property. Give us a call.

**Bob Atchison**, Rural Forestry Coordinator, coordinates all rural forestry activities for the Kansas Forest Service.

Years Between Inventory	Inventory Year	Forest Land Acres	Increase in Acres Between Inventories	Percent Land Area
N/A	N/A	4,480,000 (estimate prior to Euro settlement)	N/A	8.5
N/A	1937	1,238,000	N/A	2.4
28	1965	1,349,800	111,800	2.6
16	1981	1,358,700	8,900	2.6
13	1994	1,546,100	187,400	3
7	2001	2,216,300	670,200	4.2



## Grandpa Sure Got His Money's Worth

Name something that's been around 50 years, has protected our country both home and abroad and still provides a return on the taxpayer dollar today. Give up? No it's not Uncle Ken, but he may have operated a similar piece of equipment. The answer is military equipment, or more specifically, the equipment available through the Federal Excess Personal Property (FEPP) Program at the Kansas Forest Service.

Since it's inception in the 1960s, the program has provided vehicles and equipment to Kansas fire departments at little or no cost to the state. The equipment is acquired most often from Fort Riley and McConnell Air Force Base and transported to the State Office in Manhattan where it is prepared to be issued to a fire department. The Fire Shop at the State Office performs basic reconditioning for each piece of equipment, most often trucks. That includes new batteries and tires, fixing brakes, replacing seats, windows and damaged body parts, and converting from a soft to a hard top. Other mechanical problems uncovered are also repaired.

The trucks are then placed on the "ready line" to be loaned to the next fire department on the list. Fire departments that have submitted a request are contacted and allowed to come "kick the tires" to decide which truck best suits their own needs. The department may take the truck home with them that day or, as often happens, Fire Shop personnel load the

truck on a trailer and deliver it to the fire department.

The fire department then has up to 6 months to convert the truck into a fire engine. That includes painting and outfitting the truck with a tank, pump, radios, lights, sirens, tools, hose, and other necessary equipment.

Even though some departments have invested as much as \$20,000 in converting and equipping the truck, it is still much less expensive than a comparable commercial model. And the truck is essentially on a never ending loan. The department may keep the truck as long as they can use it. In return, the department is required to maintain a cooperative agreement with the Kansas Forest Service, grant Forest Service personnel access to the truck every 2 years for inventory and maintain and house it just as they would their own apparatus.

The biggest complaint regarding excess property is that it's slow and difficult to maintain, and it's hard to disagree with that opinion - or at least it used to be. The trucks commonly available today are diesel powered with 5-speed transmissions. Most are able to reach a top speed of 60 mph or more. That may not compare exactly with commercial models, but when the \$200,000 piece of apparatus stops at the end of the road, these workhorses just slow down and keep going. As for maintenance, it can be



Eric Berg



Casey McCoy



Mulvane Emergency Services

## Need Assistance with Forest Industry Grant Opportunities?

Recently, I have seen an increased interest from individuals involved in the forest industry in learning about grants or other funding opportunities available to help improve or expand business opportunities. While there are numerous grants available, it is sometimes very difficult to pull all of the resources together to apply in a timely manner. By the time they learn of a funding opportunity, it is often too late to obtain the support and information needed to prepare a successful application. For this reason, I would like to encourage those interested in applying for grants or other funding opportunities to contact me and begin writing their thoughts and needs down on paper. This will help me match needs of people with grants and other funding opportunities as they become known to me. I can be reached at: 318 Broadway, Valley Falls, KS 66088; 785-945-6147; 785-945-6882 (FAX); e-mail: [dbruton@oznet.ksu.edu](mailto:dbruton@oznet.ksu.edu)

A grant program currently available is through the Kansas Department of Health and Environment (KDHE). The Kansas Department of Health and Environment's Bureau of Waste Management announced in January their "12th Round of the Solid Waste Management Competitive Plan Implementation Grant Program." Approximately \$750,000 to 1 million dollars will be awarded during this round, with the application deadline of April 25. The goal of this grant is to help

develop waste management systems that incorporate recycling, source reduction, waste minimization, and public education. A few within the forest industry have taken advantage of these grants to help solve wood waste problems and to create value added opportunities from residues. For a listing of individuals who have received grant monies through this program and a description of their project, please visit KDHE's web site at: [www.kdhe.state.ks.us/waste/bwm\\_grants.html](http://www.kdhe.state.ks.us/waste/bwm_grants.html) or contact KDHE directly at: 1-800-282-9790.

Another web site that some of you may find helpful is: [www.kansasgrants.org](http://www.kansasgrants.org). This site list all of the grants available from various state and federal sources within Kansas. It is a good starting point for those wishing to begin exploring grant/funding opportunities available and provides the contact information necessary to reach the people responsible for administering specific grants.

In most cases, receiving grant monies is not a simple task and usually requires a considerable amount of cooperation, preparation, and documentation. Those having specific industry needs are encouraged to contact me so we can begin working together to find solutions.

***David Bruton**, Utilization and Marketing Forester, provides direct technical assistance to individuals and companies harvesting, using and/or making wood products.*

### ***Grandpa Sure Got His Money's Worth continued from page 10***

a challenge, but the Kansas Forest Service has two experienced mechanics on duty Monday through Friday to troubleshoot maintenance problems over the phone or, if necessary, on-site. The Fire Shop has also brought equipment back to Manhattan if repair in the field is not feasible, although due to their small numbers, shop personnel can not always utilize this option.

Currently, the Kansas fleet has 738 pieces of equipment. That includes 607 trucks (ranging from ¼ ton to 10 ton capacity), 49 generators, 13 air compressors, 16 trailers and other equipment such as self contained breathing apparatus. Almost 300 fire

departments in 90 Kansas counties utilize the program. Excess property represents a majority of fire protection equipment in quite a few stations.

So the next time you see a big, red piece of converted military fire apparatus on it's way to an emergency, first pull over to the side of the road, then recognize it as one way your tax dollars are utilized to the highest extent.

***Casey McCoy**, Rural Fire Coordinator, directs all fire activities for the Kansas Forest Service.*

## Calendar of Events *(Only events with firm dates are listed)*

**March 6** – Tree Board and City Staff Training, McPherson, KS. Contact: Dennis Carlson (dcarlson@oznet.ksu.edu) (620)-663-3501.

**March 7** – National Arbor Day Poster Contest City Winners due to District Forester. Contact: Eric Berg (eberg@oznet.ksu.edu) (785) 532-3308

**March 8** – Tree Board and City Staff Training, Dodge City, KS. Contact: Troy Bratton (tbratton@oznet.ksu.edu) (620)-227-2392.

**March 11 - 13** – Trees and Utilities National Conference, Nebraska City, NE. Contact: National Arbor Day Foundation ([www.arborday.org](http://www.arborday.org)) or call (402) 474-5655.

**March 18 - 20** – Kansas WORKS! 2003 Conference on Solid Waste Management, Winfield, KS. Contact: Marty Burke or Jim Rudeen 1 (800) 282-9790

**March 26** – Five Star Workshop (Project Aquatic and Project Wet), Dillon Nature Center, Hutchinson, KS. Contact Mary Clark at 620-663-7411 or Roland Stein at 620-672-5911.

**March 27** – KRPA Recreation Branch “Developing a Business Plan for Your Agency,” Leawood, KS. Contact Tim Murphy at 913-722-7750 for program questions.

**April 1 - 2** – Community Forestry Conference and Tree City USA Recognition Day, Manhattan, KS. Contact: Eric Berg (eberg@oznet.ksu.edu) (785) 532-3308

**April 24 - 26** – Kansas State Firefighters Association Annual Conference, McPherson, KS. Contact: [www.ksffa.com](http://www.ksffa.com) or Casey McCoy (cmccoy@oznet.ksu.edu) (785) 532-3307

**April 25** – State and National Arbor Day Contact: Eric Berg (eberg@oznet.ksu.edu) (785) 532-3308

**April 23** – Tree Planting Workshop (Pawnee County). Contact: Troy Bratton (620) 227-2392

**April 29 - May 31** – Forestry on the Grow 2003 Conference & Exposition to be held at Sequoyah State Park near Wagoner, OK. Scholarships available. Contact: Dave Bruton (785) 945-6292.

**May 7th** – Kansas Alliance for Wetland and Streams (KAWS) annual meeting. Contact: Tim Christian (620) 241-6921.



### Notice of nondiscrimination

It is the policy of Kansas State University Agricultural Experiment Station and Cooperative Extension Service that all persons shall have equal opportunity and access to its educational programs, services, activities, and materials without regard to race, color, religion, national origin, sex, age or disability. Kansas State University is an equal opportunity organization. Issued in furtherance of Cooperative Extension Work, Acts of May 8 and June 30, 1914, as amended. Kansas State University, County Extension Councils, Extension Districts, and United States Department of Agriculture Cooperating, Marc A. Johnson, Director.

**Kansas Canopy**  
Kansas Forest Service  
2610 Claflin Road  
Manhattan, KS 66502-2798

### Links of Interest:

[www.kansasforests.org](http://www.kansasforests.org)

K-State Research

and Extension

[www.oznet.ksu.edu](http://www.oznet.ksu.edu)

State of Kansas

[www.accesskansas.org](http://www.accesskansas.org)

Kansas Department

of Wildlife and Parks

[www.kdwp.state.ks.us/](http://www.kdwp.state.ks.us/)

Natural Resources

Conservation Service-

Kansas

[www.ks.nrc.usda.gov/](http://www.ks.nrc.usda.gov/)

Farm Service Agency-

Kansas

[www.fsa.usda.gov/ks/](http://www.fsa.usda.gov/ks/)