



Kansas Forest Resources, 2006

Research Note NRS-zz

This publication provides an overview of forest resource attributes for this state based on an annual inventory conducted by the Forest Inventory and Analysis program at the Northern Research Station of the USDA Forest Service. These annual estimates, along with web-posted core tables, will be updated annually. For more information regarding past inventory reports for this state, inventory program information, and sampling/estimation procedures, please refer to the citations at the end of this report.

Table 1 - Annual estimates, uncertainty, and change

	2006 estimate	SE (%)	Change since 2005 (%)
Forest land estimates			
Area (1,000 acres)	2,103.9	3.2	-0.1
Number of all live trees 1 inch diameter or larger (million trees)	734.5	4.6	2.2
Biomass of all live trees 1 inch diameter or larger (1,000 tons)	74,865.6	4.4	3.5
Net volume of live trees (million cubic feet)	2,849.4	5.1	3.9
Net volume of growing stock trees (million cubic feet)	1,473.3	6.9	-0.8
Annual net growth of live trees (thousand cubic feet per year)	48,276.5	35.2	NA
Annual mortality of live trees (thousand cubic feet per year)	38,797.3	23.0	NA
Annual removals of live trees (thousand cubic feet per year)	7,563.7	73.1	NA
Timberland estimates			
Area (1,000 acres)	2,019.4	3.3	-0.4
Number of all live trees 1 inch diameter or larger (million trees)	691.1	4.5	1.4
Biomass of all live trees 1 inch diameter or larger (1,000 tons)	72,480.4	4.6	3.4
Net volume of live trees (million cubic feet)	2,778.6	5.2	3.8
Net volume of growing stock trees (million cubic feet)	1,443.3	7.1	-0.9
Annual net growth of live trees (thousand cubic feet per year)	47,206.6	35.7	NA
Annual mortality of live trees (thousand cubic feet per year)	36,371.6	24.3	NA
Annual removals of live trees (thousand cubic feet per year)	15,244.3	48.9	NA
Annual net growth of growing stock trees (thousand cubic feet per year)	17,786.2	81.5	NA
Annual mortality of growing stock trees (thousand cubic feet per year)	14,921.7	31.7	NA
Annual removals of growing stock trees (thousand cubic feet per year)	8,292.5	58.4	NA

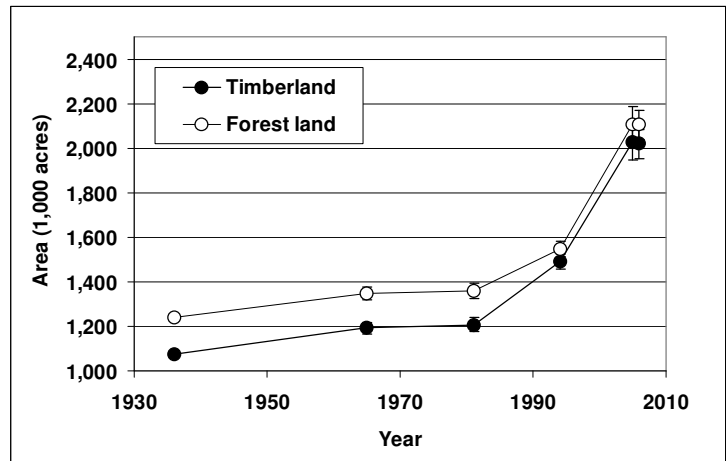


Figure 1 - Area of timberland and forest land by year

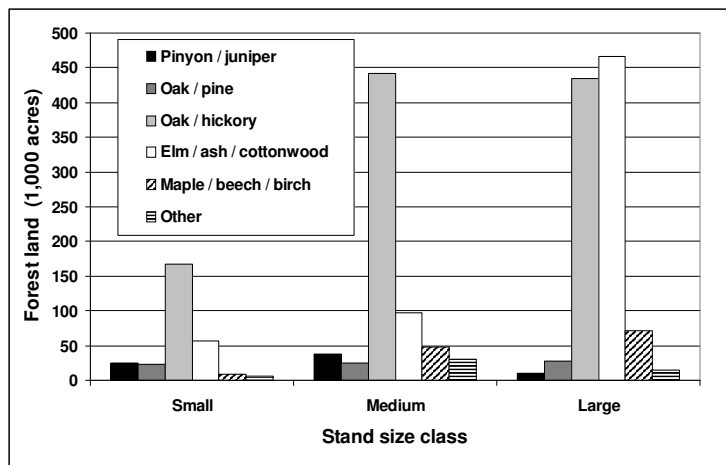


Figure 2 - Timberland area of top six forest types by stand size class

Note: The Pinyon/juniper forest type group is mainly eastern redcedar. Oak/pine is mainly eastern redcedar/hardwoods.



Table 2 - Top 10 species by statewide volume estimates

Rank	Species	Volume of live trees on timberland (million cubic feet)	Sampling error (%)	Change since 2005 (%)	Volume of sawtimber on timberland (million board feet)	Sampling error (%)	Change since 2005 (%)
1	Hackberry	373.9	11.2	6.5	760.8	15.8	3.4
2	Cottonwood	327.7	27.2	-5.8	1,090.0	29.0	-6.8
3	Green ash	223.8	11.9	5.7	357.3	16.4	-11.5
4	American elm	217.7	9.2	1.7	165.1	23.5	8.7
5	Osage-orange	180.3	11.7	5.6	0.0	0.0	0.0
6	Black walnut	169.0	10.8	4.8	409.8	15.3	5.6
7	Bur oak	148.1	17.9	0.7	348.7	24.5	-5.4
8	Red mulberry	134.0	16.7	13.8	55.3	53.0	10.2
9	Honeylocust	98.0	15.3	5.6	61.2	35.8	14.2
10	Northern Red oak	97.6	24.4	0.7	405.9	26.8	6.7
	Other softwood species	85.7	16.9	2.5	146.1	26.4	-5.0
	Other hardwood species	722.7	9.4	5.9	1,543.2	16.3	-42.2
	All species	2,778.6	5.2	3.8	5,343.6	8.8	-0.2

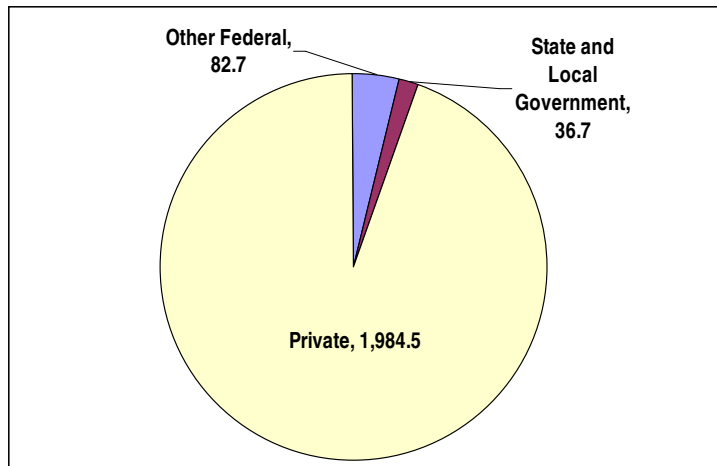


Figure 3 - Forest land area (1,000 acres) by ownership group

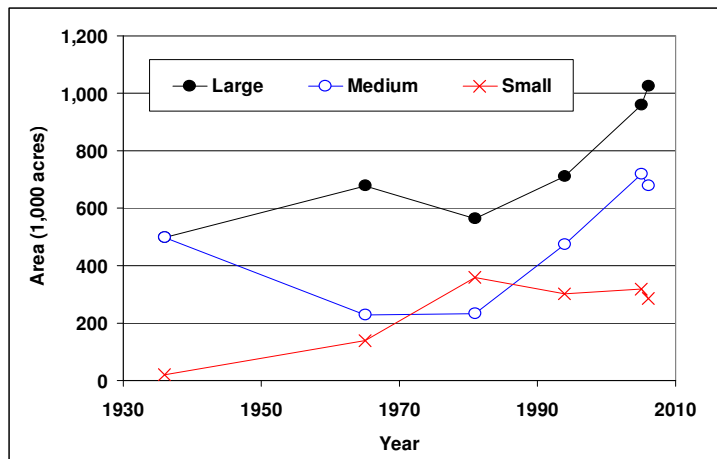


Figure 4 - Area of timberland by stand size class and year

[Large diameter: Stands with an all live stocking value of at least 10 (base 100) and with more than 50 percent of the stocking in medium and large diameter trees; and with the stocking of large diameter trees equal to or greater than the stocking of medium diameter trees. Medium diameter: Stands with more than 50 percent of the stocking in medium and large diameter trees; and with the stocking of large diameter trees less than the stocking of medium diameter trees. Small diameter: Stands on which at least 50 percent of the stocking is in small diameter trees. Nonstocked: Forest land with all live stocking less than 10.]



Kansas Issue Update – Density increases and trends in growing stock volume per acre of timberland

Kansas plays host to the transition of the central hardwood forests of the United States into the grasslands of the Great Plains. Limited rainfall and fire have traditionally kept the majority of forestland in the eastern 1/3 of the state though riparian forests of cottonwood, willow and elm are found intermittently all the way to the Colorado border.

In many places, Kansas' forests are denser now than in the recent past (Fig. 5). Individual trees are, on average, larger in the latest inventory than in previous ones (Fig. 6). Although the combination of more and larger trees suggests that there are increased opportunities for utilization, density increases could also mean that forest health problems that attack stressed trees are on the horizon. The smaller rate of increase in growing stock volume per acre between 1994 and 2006 compared to the earlier interval (1981 – 1994) suggests: 1) that there is less unoccupied growing space and 2) that the trees, being larger (and presumably older) are exhibiting slowdowns in their volume growth.

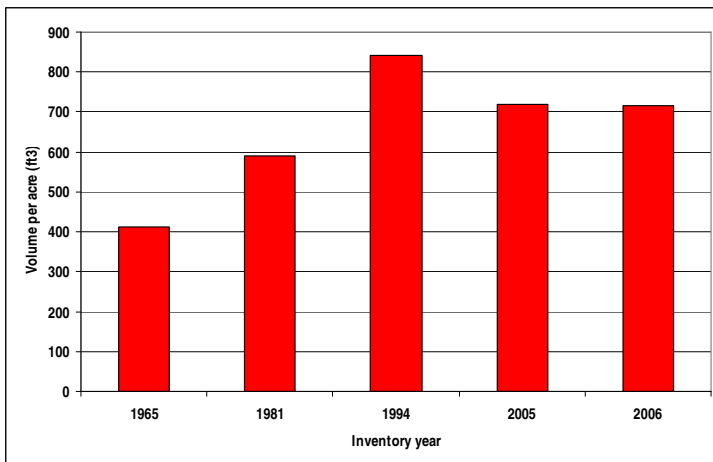


Figure 5 – Growing stock volume per acre of timberland increased steadily between 1965 and 1994, but has declined slightly since then.

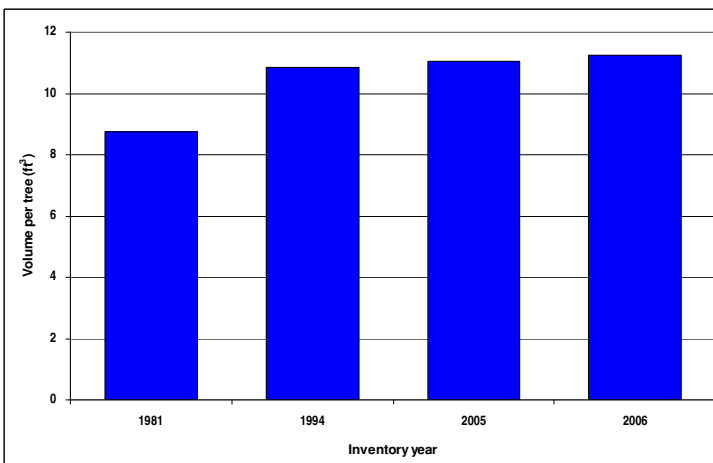


Figure 6 – Volume per growing stock tree on timberland has leveled off recently.



Citation for this Publication

Moser, W.K.; Hansen, M.H.; Atchison, R.L. 2007. Kansas' forest resources, 2006. Res. Note. NRS-yy. Newtown Square, PA: U.S. Department of Agriculture, Forest Service, Northern Research Station. 4 p.

FIA Program Information

Bechtold, W.A.; Patterson, P.L. 2005. The Enhanced Forest Inventory and Analysis Program: national sampling design and estimation procedures. Gen. Tech. Rep. SRS-80. Asheville, NC: U.S. Department of Agriculture, Forest Service, Southern Research Station. 85 p.

Smith, W.B., 2002. Forest inventory and analysis: a national inventory and monitoring program, *Environmental Pollution*. 116: 233-242.

USDA Forest Service. 2004. Forest inventory and analysis national core field guide, Vol. 1, Field Data Collection Procedures for Phase 2 Plots, Ver. 2.0 [Online], available at www.fia.fs.fed.us/library/field-guides-methods-proc (verified 15 Apr 2005).

Additional Kansas Inventory Information

Chase C.D., Strickler J.K. 1968. Kansas woodlands. St. Paul, MN: U.S. Forest Service, North Central Research Station Resource Bulletin NC-4. 50 p.

Kansas State College. 1939. Woodlands of Kansas. Manhattan, KS: Kansas State College Agricultural Experiment Station Bulletin 285. 42 p.

Leatherberry, E.C., Schmidt T.L., Strickler J. K., Aslin R.G. 1999. An analysis of the forest resources of Kansas. St. Paul, MN: USDA Forest Service North Central Research Station Research Paper NC – 334. 114 p.

Moser W.K., Brand G.J., Powers M. 2007. Kansas' forest resources in 2005. St. Paul, MN: U.S. Department of Agriculture, Forest Service, Northern Research Station. Resour. Bull. NRS-11. 25 p.

Moser W.K., Hansen M.H., Atchison R., Brand G.J., Butler B., Meneguzzo D., Perry C.H., Reading W., Woodall C.W. 2007. Kansas' forests 2001-2005, Part A. St. Paul, MN: U.S. Department of Agriculture, Forest Service, Northern Research Station. Resour. Bull. NRS-yy. 95 p. In prep.

Raile G.K., Spencer J.S. 1984. Kansas forest statistics, 1981. St. Paul, MN: USDA Forest Service North Central Forest Experiment Station Resource Bulletin NC – 70. 124 p.

Reading W.H., Bruton D.L., 2007. Kansas timber industry – an assessment of timber product output and use, 2003. Resour. Bull. NC-269. St. Paul, MN: U.S.D.A, Forest Service, North Central Research Station. 73 p.

Spencer J.S., Strickler J.K., Moyer W. J. 1984. Kansas forest inventory, 1981. St. Paul, MN: USDA Forest Service North Central Forest Experiment Station Resource Bulletin NC – 83. 134 p.

The U.S. Department of Agriculture (USDA) prohibits discrimination in all its programs and activities on the basis of race, color, national origin, age, disability, and where applicable, sex, marital status, familial status, parental status, religion, sexual orientation, genetic information, political beliefs, reprisal, or because all or part of an individual's income is derived from any public assistance program (Not all prohibited bases apply to all programs.) Persons with disabilities who require alternate means for communication of program information (Braille, large print, audiotope, etc.) should contact USDA's TARGET Center at (202) 720-2600 (voice and TDD). To file a complaint of discrimination, write to USDA, Director, Office of Civil Rights, 1400 Independence Avenue, S.W., Washington, DC 20250-9410, or call (800)795-3272 (voice) or (202)720-6382 (TDD). USDA is an equal opportunity provider and employer.